

**STUDENT**  
A COLLEGE BASED MODEL  
**ADVISING**



# MISSION

Students will be provided with consistent, robust, and holistic advising supported by a team of advisors housed within College Centers and Signature Programs. Advising will be aligned with students' major and career goals, supportive of student identities, and focused on improving retention and graduation rates through strong relationships and inclusive communities.

# VISION

The model allows for a strengths-based approach for faculty and professional advisors to use their role-specific skills in a coordinated effort to serve students better. The expanded college-based advising model allows for faculty and professional advisors to maintain manageable caseloads, granting more time to work meaningfully with students. Faculty and professional advisors will support each other to advise students toward timely graduation.

# CORE VALUES

- Provide consistent point(s) of contact within college or centralized spaces within signature programs.
- Provide culturally aware advising practices that address students' needs.
- Students, faculty, and professional advisors are included in the model.
- Cooperation and support to improve student advising experience.



# STUDENT ROLES AND RESPONSIBILITIES

Students are encouraged to take ownership of their education by utilizing available self-service tools such as Bay Advisor, DAR, Stellic, and academic roadmaps.

Students are encouraged to connect with their advisor each semester and maintain open, transparent communication through appointments or email.

Students should be familiar with university policies and academic requirements and regulations.



# FACULTY ROLES AND RESPONSIBILITIES

Faculty oversee the curriculum, handle course substitutions, approve articulation, and manage academic roadmaps in coordination with academic scheduling.

Faculty support students with career exploration, internships, research, field experience, relevant co-curricular opportunities, and guidance for both career and graduate school pathways.

Faculty issue academic alerts and referrals to ensure students receive timely support and stay on track with their academic goals.



# ADVISOR ROLES AND RESPONSIBILITIES

Advisors manage a caseload of 300 or fewer students, proactively reaching out and engaging with them to maintain strong relationships.

Advisors can verify University, GE, and major requirements, assist with identifying articulation, complete major checks, and review and confirm Degree Audit Reports.

Advisors collaborate with signature programs, partner with faculty, and participate in student success initiatives.





George Hanna



Sam Tran



Cindy Salinas

**Wendy  
Herbert**

**Jennifer  
Flores**



Jennifer Aure



Bill Irwin

# ADVISING RESOURCE CENTER



# ADVISING RESOURCE CENTER

- The ARC is a central hub connecting students with advisors for guidance on course selection, degree planning, and academic policies.
- We streamline the advising process to ensure personalized support for every student at Cal State East Bay.
- ARC also supports several signature programs, including assistance for undeclared and international students, the Program for Accelerated College Education (PACE), and Pioneer Success Coaches.
- In partnership with Student Affairs, coordinates key student resources such as Bay Advisor, Degree Audit Report (DAR) and Stellic.
- Facilitates advisor collaborations, professional development and wellness, and engagement in Student Success Initiatives.

# STUDENT SUPPORT SERVICES

- Offer one-on-one or group advising for all degree requirements, both virtually and in-person.
- Assist with registration, College/University forms, and understanding major, GE, and graduation requirements.
- Provide guidance on policies, technology, and academic planning.
- Provide support to high concern students, follow up on academic alerts/cases to promote student success and retention.
- Help students navigate systems, build a sense of belonging, and strengthen their identity within a supportive community.



Erin Robertson



Ali Karayel



Shabana Ali



Lucy Castillo



Fatima Mohammadi



Rebecca Sierra



Justin Donato

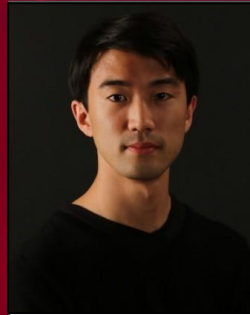


Javi Peña

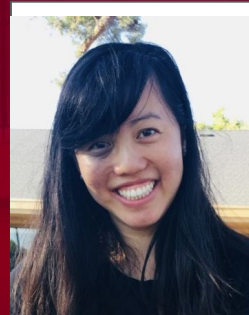




Angela Byrns



Peter Lee



Rayna Young

COLLEGE OF  
EDUCATION & ALLIED STUDIES



Joanna Cady-Aguilar



Evelia Jimenez



Kailey Jo Palmer



Monika Chung

**Avel Perez**

**Kelley Gove**



Bethany Villafuerte



Morgan Grana



Kristen Fu



Christina Bluck

**Janet  
Snyder**



Audrey Larson

**Lisa  
Holmstrom**



Erin Quineri



Natalie Nelson



Mo Her

**Jerome  
Narvaez**

**Tristan  
Garcia**

**Terri  
Cunningham**

**Andrea  
Weicker**

**Wendy  
Couttien**



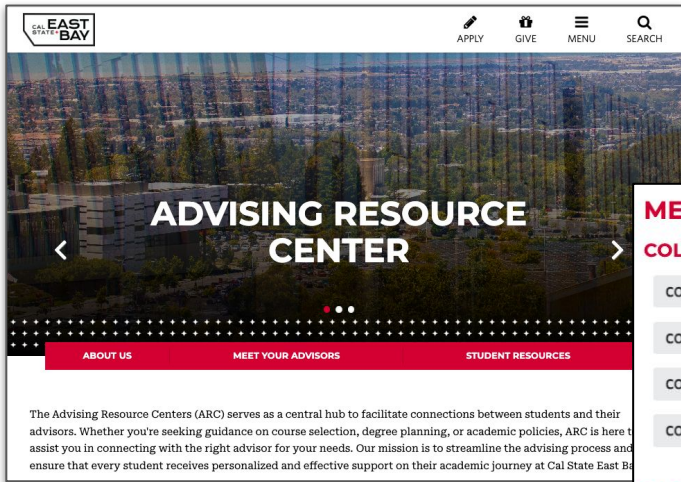
Lara Dungan



Sharla Blank

**COLLEGE OF  
LETTERS, ARTS & SOCIAL SCIENCES**





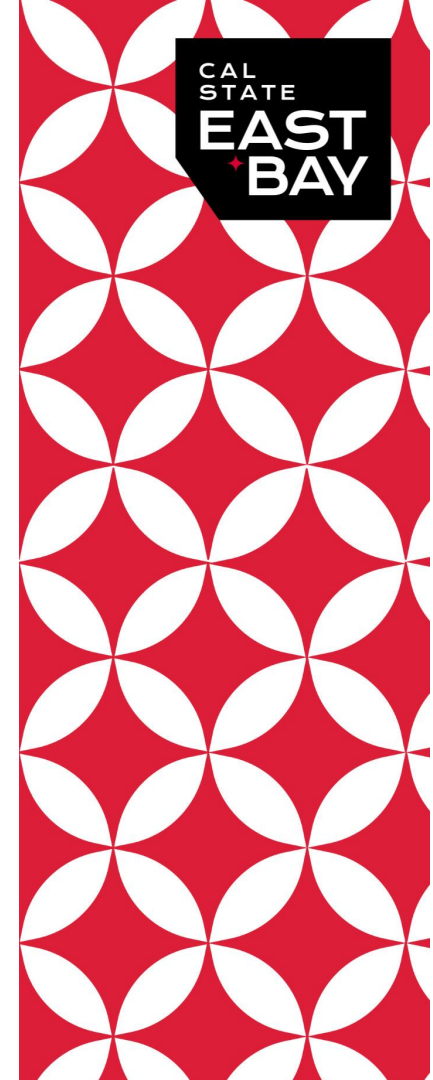
## MEET YOUR ADVISING TEAMS

### COLLEGE ADVISING TEAMS

- COLLEGE OF BUSINESS & ECONOMICS (CBE) ▾
- COLLEGE OF EDUCATION & ALLIED STUDIES (CEAS) ▾
- COLLEGE OF LETTERS, ARTS, & SOCIAL SCIENCES (CLASS) ▾
- COLLEGE OF SCIENCE (CSCI) ▾

### SIGNATURE PROGRAM ADVISING TEAMS

- ADVISING RESOURCE CENTER (ARC) ▾
- ATHLETICS ADVISING ▾
- EDUCATIONAL OPPORTUNITY PROGRAM (EOP) ▾



[www.csueastbay.edu/advising](http://www.csueastbay.edu/advising)



[advising@csueastbay.edu](mailto:advising@csueastbay.edu)



510-885-2698

