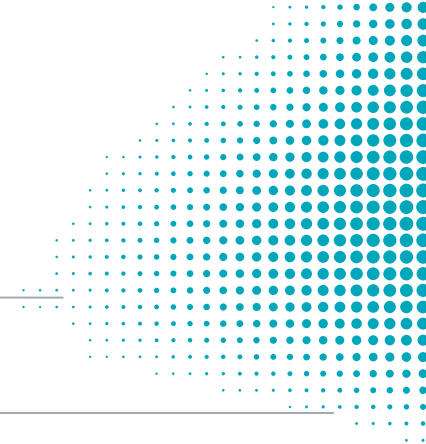


Advising Integration Summit

January 8th & 9th

Chabot Space & Science Center
9:15 AM - 04:15 PM



Day 1 - Alignment

9:15 AM
MAIN ENTRANCE

Check-in and Breakfast

9:45 AM
PLANETARIUM

Summit Overview and Alignment

JENNIFER AURE
BILL IRWIN

10:30 AM
PLANETARIUM

Integration Activities

KATHLEEN WONG-LAU

12:00 PM
CAFÉ

Lunch

1:30 PM

Deep Dives Round One

CLASSROOM 2

APPOINTMENT SUMMARIES: USING BAY ADVISOR FOR OPTIMAL ENGAGEMENT

BILL IRWIN

CLASSROOM 3

ENHANCING NEW STUDENT ONBOARDING AT EAST BAY

JENNIFER AURE

CLASSROOM 4

PIONEER SUCCESS COACHES PANEL:
MAXIMIZING IMPACT & THE POWER OF REFERRALS

PIONEER SUCCESS
COACHES

2:45 PM
CAFÉ

Snack Break

3:00 PM

Deep Dives Round Two

CLASSROOM 1

LEVELING UP YOUR ACADEMIC PLAN WITH STELLIC

SHABANA ALI

CLASSROOM 2

PROACTIVE CALENDARING AND MESSAGING
IN BAY ADVISOR: "SET IT & FORGET IT"

BILL IRWIN

CLASSROOM 3

BLUEPRINTS FOR SUCCESS: USING EDUCATION PLAN
TEMPLATES

JENNIFER AURE

CLASSROOM 4

STUDENT EQUITY & SUCCESS PANEL:
HOW DO WE MAKE CONNECTIONS

SEAS COUNSELORS

4:00 PM
AMPHITHEATER

Group Photo



Advising Integration Summit

January 8th & 9th

Chabot Space & Science Center
9:15 AM - 04:15 PM

Day 2 - Autonomy

9:15 AM
MAIN ENTRANCE

Check-in and Breakfast

9:45 AM
PLANETARIUM

Freshmen Enrollment Overview

JENNIFER AURE
BILL IRWIN

10:30 AM
VARIOUS
LOCATIONS

Group Activity:

MAPPING THE STUDENT JOURNEY: EXPLORING FRESHMAN
BLOCK SCHEDULING PLANS AND IDEAS

12:00 PM
CAFÉ

Lunch

1:30 PM
VARIOUS
LOCATIONS

Group Discussion:

REAL TALK: BUILDING A CULTURE OF COLLABORATION

2:30 PM
CAFÉ

Snack Break

3:00 PM
PLANETARIUM

Share Out & Closing

